

Photographs and landscape: art and research



Claudio Bozzini^{1,2}, Patrik Krebs¹, Marco Conedera¹



¹ Swiss Federal Institute for Forest, Snow and Landscape Research WSL

www.wsl.ch/monoplotting
claudio.bozzini@wsl.ch



² Fondazione Archivio fotografico Roberto Donetta

www.ArchivioDonetta.ch

Photographs and landscape: art and research

Agenda:

- Advantages and benefits of photographs
- Toponymy of Corzoneso: thanks Roberto!
- A present day natural hazard event

Photographs and landscape: art and research

Advantages and benefits of photographs:

- landscape documentation: huge amount of images
- human perspective: intuitive and easy to understand
- go back to the XIX century
- high resolution, rich in details

Since 2010 at WSL:

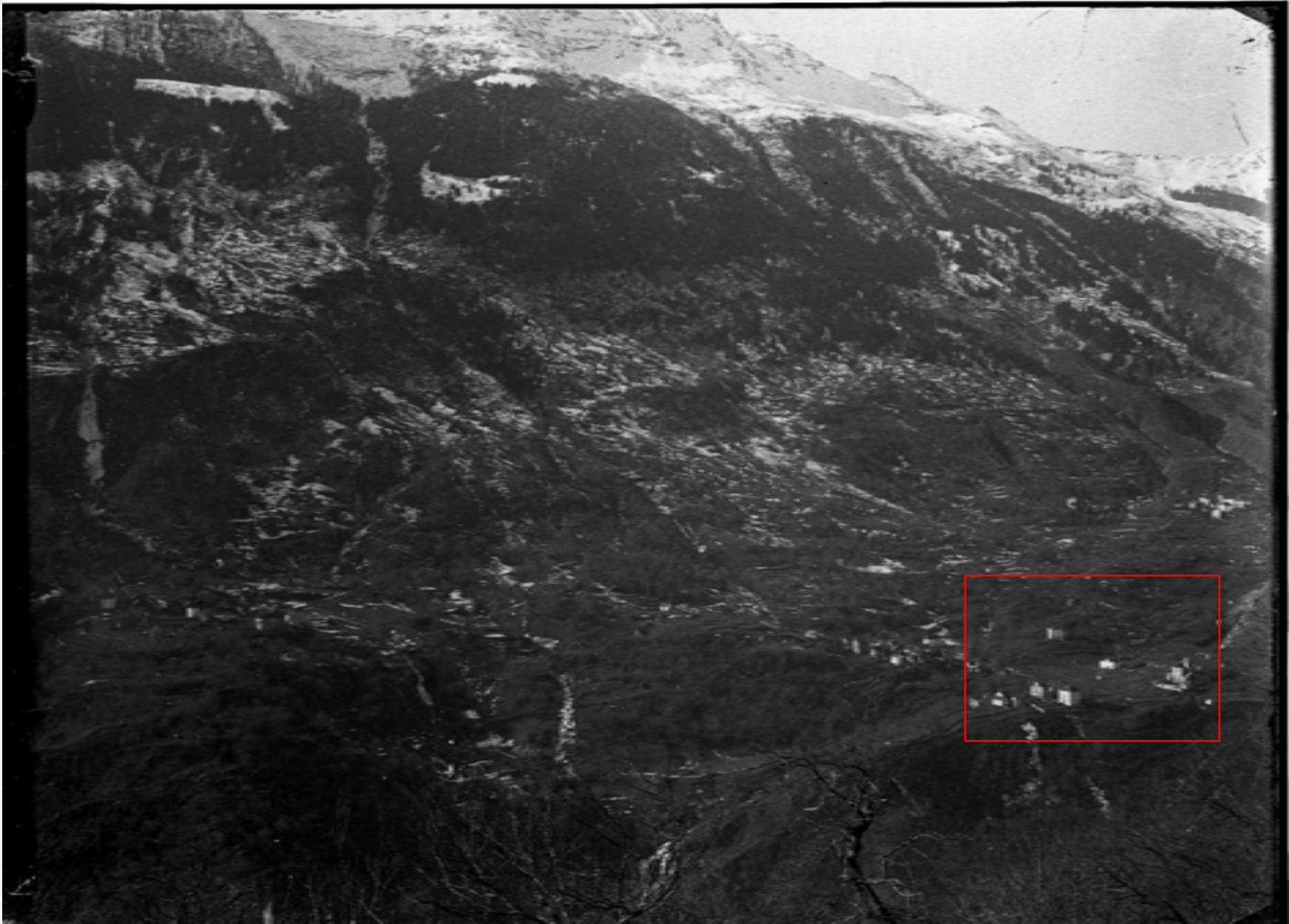


monophotogrammetry
monoplotting



WHAT'S NEXT 2018!

Photographs and landscape: toponymy research in Corzoneso (TI)



Corzoneso – 1900 ca

Archivio Donetta.ch



Photographs and landscape: toponymy research in Corzoneso (TI)

The central map shows the town of Corzoneso and its surroundings, including the river Arno. Red arrows point from the map to several photographs: one to a stone structure in a field, one to a hillside with buildings, one to a valley with a river, one to a hillside with a road, one to a group of people with a dog, one to a building under construction, one to a hillside with a road, and one to a valley with a river.

Èira
Rascânn

Photographs and landscape: toponymy research in Corzoneso (TI)

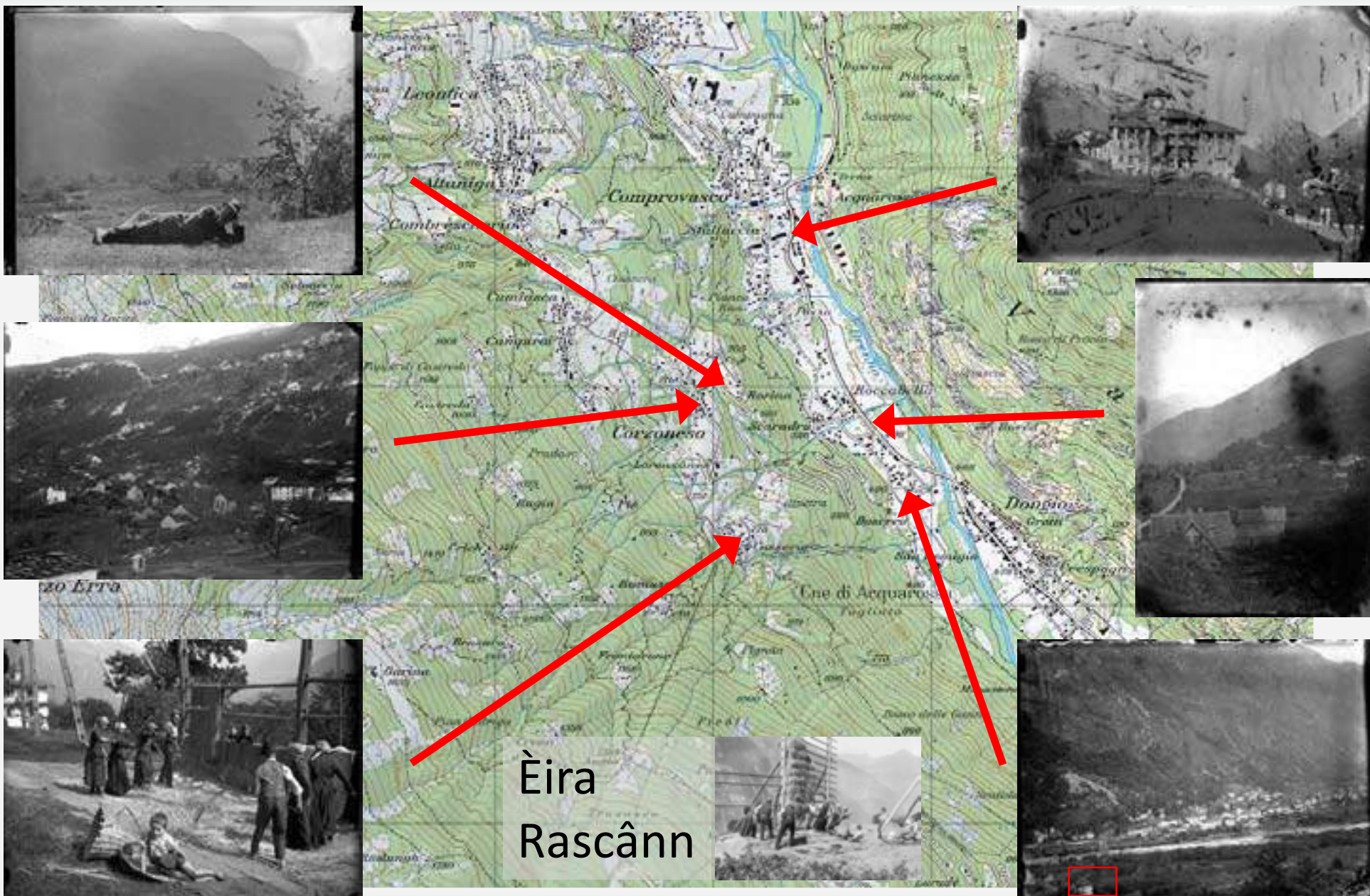
The central map shows the town of Corzoneso and its surroundings, including areas like Comprovasso, Rascân, and Èira. Red arrows point from the map to various photographs: one to a stone in a field (top left), one to a hillside with buildings (middle left), one to a mountain landscape (top right), one to a group of people with a dog (bottom left), and one to a valley view (bottom right). A small red box on the right side of the map highlights a specific area.

Èira
Rascânn

Photographs and landscape: toponymy research in Corzoneso (TI)



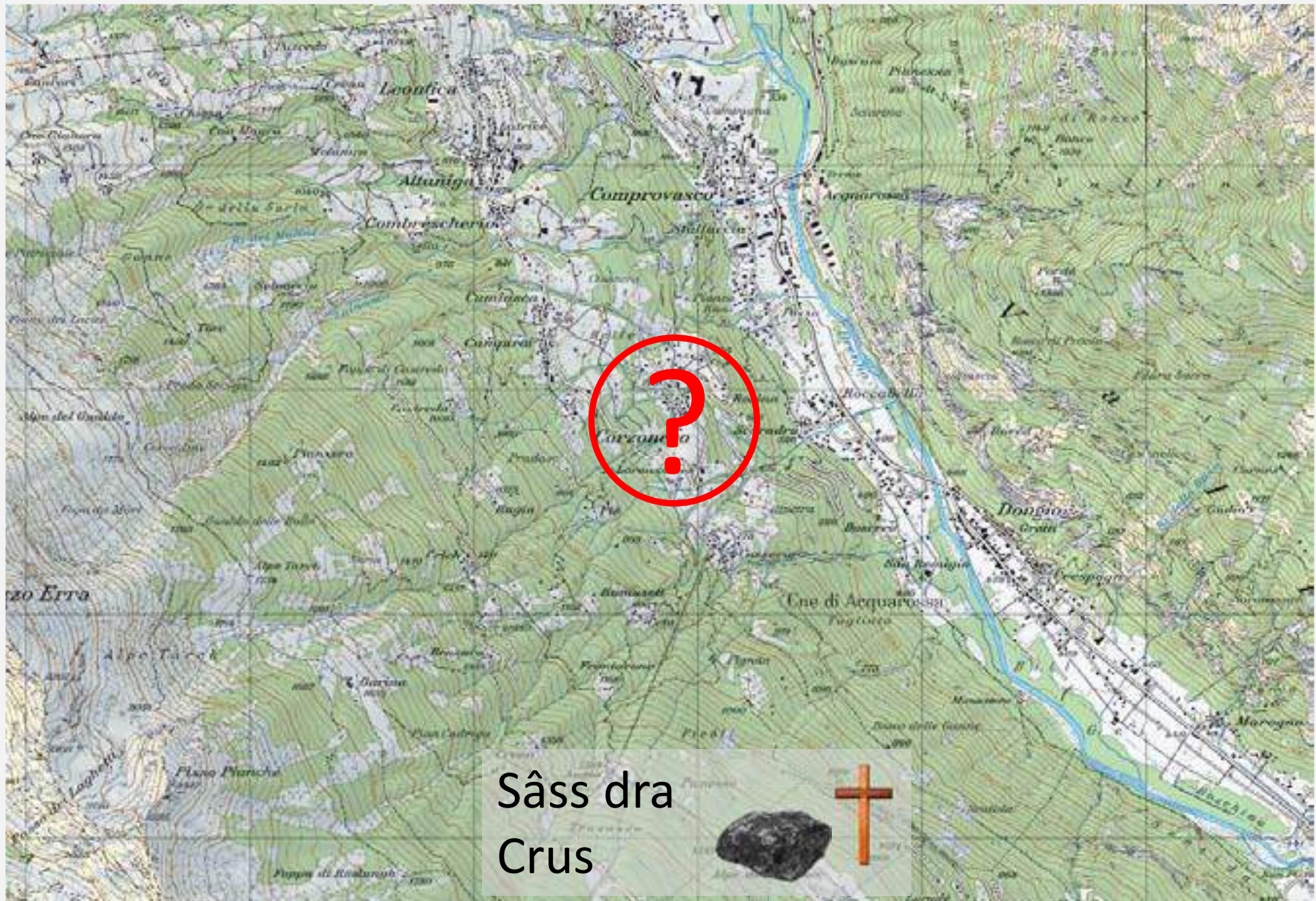
Photographs and landscape: toponymy research in Corzoneso (TI)



Photographs and landscape: toponymy research in Corzoneso (TI)



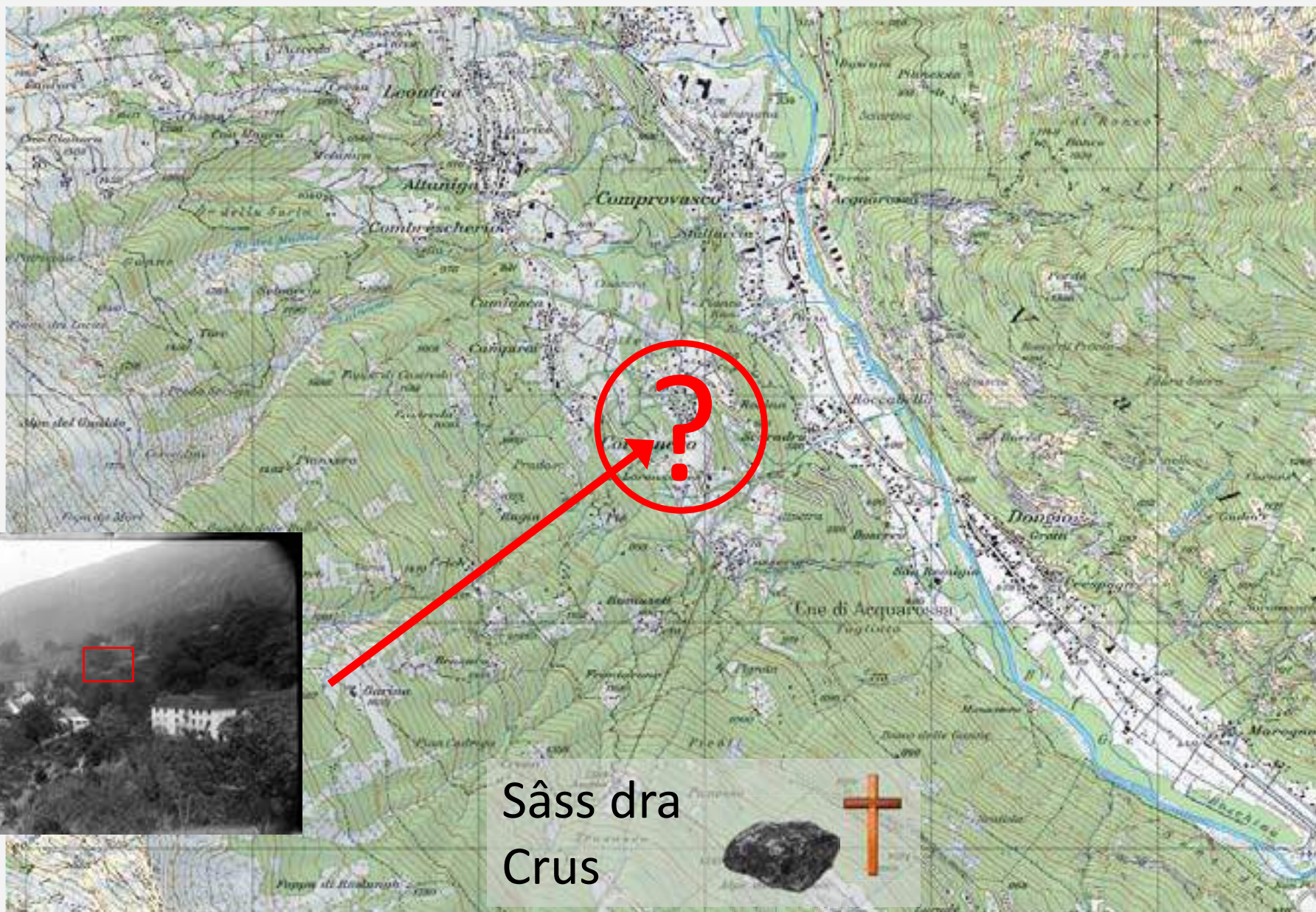
Photographs and landscape: toponymy research in Corzoneso (TI)



Sâss dra
Crus



Photographs and landscape: toponymy research in Corzoneso (TI)

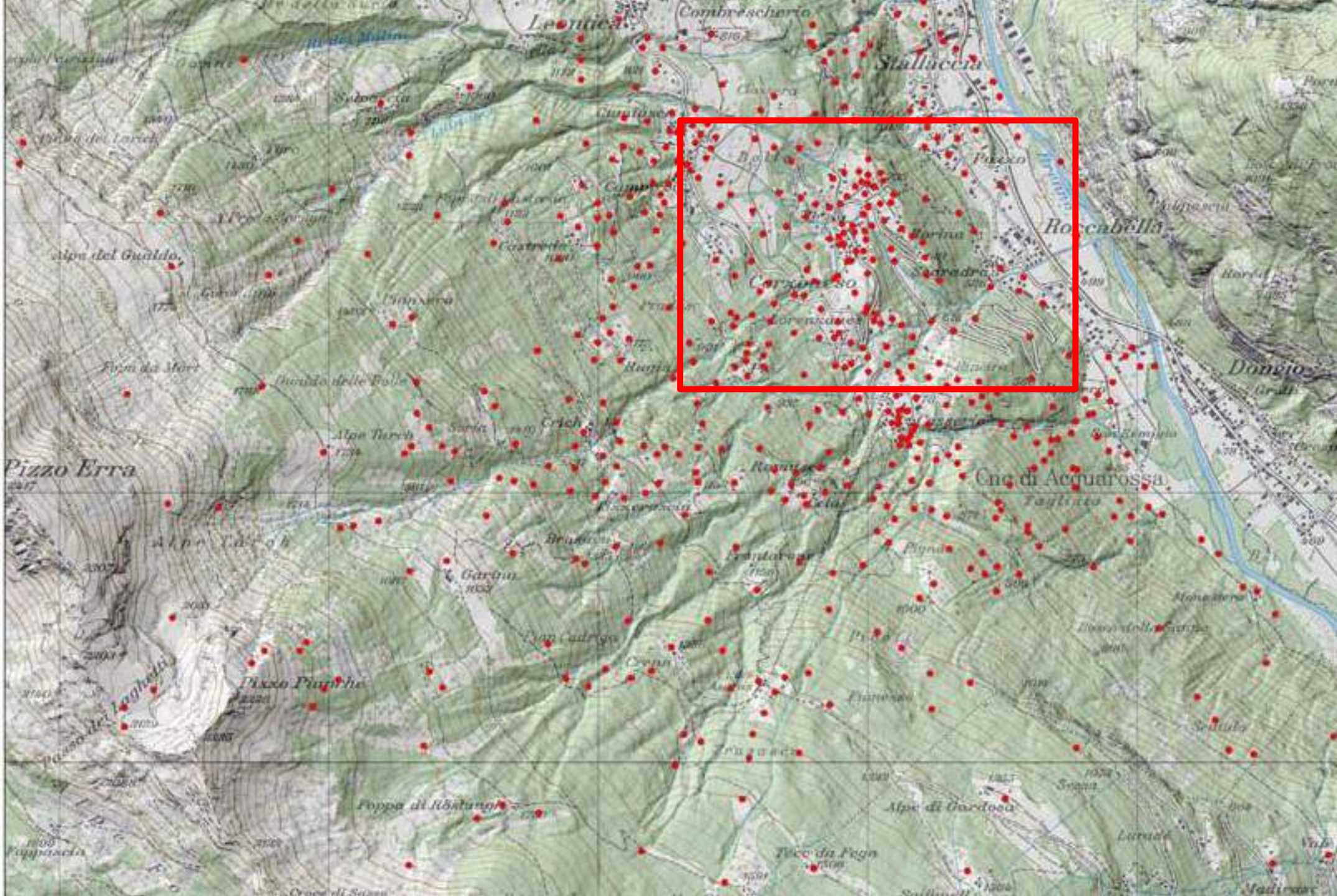


Sâss dra
Crus



Photographs and landscape: toponymy research in Corzoneso (TI)







Bolle

Pózz

Pozzo

Rocabéla

Curzónas

Rurina

Scaradra

Corxoneso

Lorenxanes

Luranzánas

Gesa d' Luranzánas

Gesa d' Sant Nazari

Capela d' Nugareda

Capela d' Sama

Capela d' Grazi

Capela d' Scar

Capela d' Barnard

Capela d' Sant Josep

Rasa

Luinásch

Camparigna d' Fo

Gesad San Barnarden

Stalen du Pezz

Pianca

Mundela

Castell da Pózz

Eira

Fopa

Cavalétt

Funtanela

Stala

Pian Sott Gesa

Fira di Vei

Carten

Purtea d Carten

Riscèira

Nugareda

Castell

Sott Gesa

Sott Campagna

Mundatt

Murinatt

Tecc Planezz

Planézz

Sott ra Vigna

Pézza d' Pomm

Campón

Gheisc

Rè di Boll

Cruèsc

Ca Brusada

Ca Comunai

Gampagna

Dragon

Strada d' Scar

Urabièn

Boletta

Ciussott

Punt dra Gesa Tacion

Murin

Eira

Sàss d' Rurina

Zapp d' Rurina

Spiuratèn

Valègia

Nèigra

Uspada

Órt

Masniech

Pian Farina

Fópp

Tècc da Buneira

Curlia

Cará dra Crus

Camp Stèia

Punt dr' Angiul

Caralrú

Vigna du Sàss

Pradasc

Bunèira

Ravina

Bòcc dra Crus

Ór Tencia

California

Re da Scaradra

Centralina

Urmá Scinc

Päss Madaleina

Valègia

Tecc Cal Fornia

Madirú

Punt dru Dial

Funtana

Nucheta

Sassói

Sàss

Pian da Luranzánas

Stalop

Pian Sècc

Re di Madiru

615

Nuca

Pradasc

Vall du Sgiascei

Selva

Bustráv

Capalana

Valasc

Re di Nuca

Vulte

Ór Frècc

Prò d Sant Antoni

Pie d

Valasc

Nuca

Re di Nuca

615

Vulte

901

15

381

526

615



Curzónas

Photographs and landscape: a natural hazard example



Tschentetal/Egerle – Adalboden (BE)

Abteilung Naturgefahren (BE)

Goal:

- map the event
- restore asap

Photographs and landscape: a natural hazard example



Tschentetal/Egerle – Adelboden (BE)

Abteilung Naturgefahren (BE)

Goal:

- map the event
- restore asap



monophotogrammetry
monoplotting



Photographs and landscape: art and research



Claudio Bozzini^{1,2}, Patrik Krebs¹, Marco Conedera¹



¹ Swiss Federal Institute for Forest, Snow and Landscape Research WSL

www.wsl.ch/monoplotting
claudio.bozzini@wsl.ch



² Fondazione Archivio fotografico Roberto Donetta

www.ArchivioDonetta.ch

Thanks!

